



GLOBAL DIESEL[®]

Fuel Injection Systems



www.global-diesel.com

2024

GLOBAL DIESEL®

Fuel Injection Systems



We have founded in 1986 as Cimbar Diesel Pump Injector Repair Service. We have decided to start to produce diesel fuel injection system spare parts in addition to repair service after serving many years. In this context, we produced more than 60 type of diesel pump elements by making serious investments in 2004. We have changed our company identity completely in 2015 and got Global Diesel name. We only serve as a spare parts manufacturer of diesel fuel injection systems. Besides that we produce special tools that are unique in the world so that services can repair pumps and injectors easily.

Quality is before anything else for us. If you compromise on quality, you will neither enjoy your work nor your customers will be satisfied. In this context, our understanding of quality brings us customer satisfaction. We follow the latest technology in order not to compromise on quality. And we integrate it into our facilities at full speed.

Thanks to quality in the products we produce, we succeeded to enter almost every diesel services in Turkey. In recent years, we export most of our production. Global Diesel brand is known worldwide from Peru to Australia. Global Diesel brand announces own name every day and expands its reached service group.

www.global-diesel.com

2024

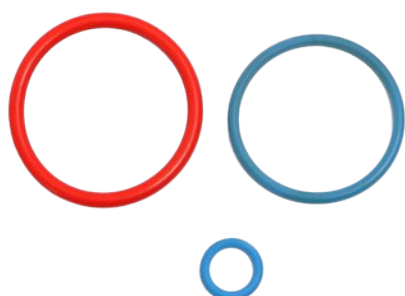
CATERPILLAR
C13 - C15 - C16 - C18 - C27 - C32 - 3406E
3500B - 3508B - 3512B - 3516B - 3516E
C10 - C12 - 317C - 3196



Caterpillar C10 EUI Valve
 Global Diesel Code: 062 C10



Caterpillar C15 EUI Valve
 Global Diesel Code: 062 C15



EUI Repair Kit (for 3406E Family)
 Global Diesel Code: 062 06E-0



Actuator Repair Kit (for 3406E Family)
 Global Diesel Code: 062 06E-A



EUI Repair Kit (for 3516E Family)
 Global Diesel Code: 062 16E-0



Actuator Repair Kit (for 3516E Family)
 Global Diesel Code: 062 16E-A

VOLVO DELPHI - E3



Volvo EUI Valve

Global Diesel Code: 022 588
7135-588



EUI Repair Kit

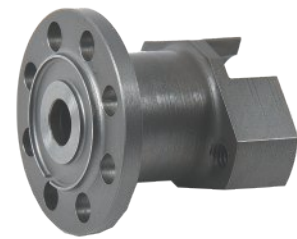
Global Diesel Code: 022 948
276948

VOLVO DELPHI - A3



Volvo EUI Valve

Global Diesel Code: 022 486
7135-486



Volvo EUI Actuator Spacer

Global Diesel Code: 022 486S
7135-486



EUI Repair Kit (without Seal Plate)

Global Diesel Code: 022 488
7135-488



Actuator Repair Kit

Global Diesel Code: 022 493
7135-493



EUI Repair Kit (with Seal Plate)

Global Diesel Code: 022 488P
7135-488



CP1 Pump Plunger

Global Diesel Code: 013 101 349

F 01M 101 349

| Suitable Pumps for CP1 Pump Plunger | |
|-------------------------------------|---------------|
| Pump Numbers | |
| 0 445 010 006 | 0 445 010 046 |
| 0 445 010 007 | 0 445 010 050 |
| 0 445 010 008 | 0 445 010 071 |
| 0 445 010 010 | 0 445 010 072 |
| 0 445 010 011 | 0 445 010 132 |
| 0 445 010 013 | 0 445 010 138 |
| 0 445 010 018 | 0 445 010 162 |
| 0 445 010 019 | 0 445 010 163 |
| 0 445 010 021 | 0 445 010 178 |
| 0 445 010 024 | 0 445 010 201 |
| 0 445 010 027 | 0 445 010 203 |
| 0 445 010 028 | 0 445 010 253 |
| 0 445 010 030 | 0 445 010 267 |
| 0 445 010 038 | 0 445 020 002 |



CP1 Pump Repair Kit

Global Diesel Code: 013 101 454

F 01M 101 454



CP1 Pump Repair Kit

Global Diesel Code: 013 101 456

F 01M 101 456



EUI/EUP (PDE/PLD) Valve

Global Diesel Code: 012 00B



EUI (PDE) Valve (Suitable for

Scania, Iveco, Volvo)

Global Diesel Code: 012 00S



EUP Valve (Suitable for Mack, MTU)

Global Diesel Code: 012 00M



EUI Valve (Suitable for Detroit S50/S60)

Global Diesel Code: 052 00D



EUP Plug

Global Diesel Code: 012 MFP

- 9,50 - 9,52 - 9,54 - 9,56 - 9,58 - 9,60



EUI Plug

Global Diesel Code: 012 SFP

- 14,70 - 14,72 - 14,74 - 14,76 - 14,78 - 14,80



EUP Plug (Suitable for Mack)

Global Diesel Code: 012 MP

- 9,50 - 9,51 - 9,52 - 9,54 - 9,56 - 9,58 - 9,60



EUP Roller (Suitable for Axor, Actros)

Global Diesel Code: 012 402

F 00H N37 402



EUP Roller (Suitable for Atego)

Global Diesel Code: 012 628

F 00H N37 628

| 012 00B | +0,01 | +0,03 | +0,06 | +0,09 | +0,12 |
|---------|-------|-------|-------|-------|-------|
| Ø6,997 | ✓ | ✓ | | | |
| Ø7,000 | ✓ | ✓ | ✓ | | |
| Ø7,005 | ✓ | ✓ | ✓ | | |
| Ø7,010 | ✓ | ✓ | ✓ | ✓ | ✓ |
| Ø7,015 | ✓ | ✓ | ✓ | ✓ | ✓ |
| Ø7,020 | | ✓ | ✓ | ✓ | ✓ |
| Ø7,025 | | ✓ | ✓ | ✓ | ✓ |
| Ø7,030 | | ✓ | ✓ | ✓ | ✓ |
| Ø7,035 | | ✓ | ✓ | ✓ | ✓ |
| Ø7,040 | | ✓ | ✓ | ✓ | ✓ |
| Ø7,045 | | ✓ | ✓ | ✓ | ✓ |
| Ø7,050 | | ✓ | ✓ | ✓ | ✓ |
| Ø7,055 | | | ✓ | | |
| Ø7,060 | | ✓ | ✓ | | |
| Ø7,065 | | | ✓ | | |
| Ø7,070 | | ✓ | ✓ | | |
| Ø7,075 | | | ✓ | | |
| Ø7,080 | | ✓ | ✓ | | |
| Ø7,085 | | | ✓ | | |
| Ø7,090 | | | ✓ | | |



| 012 00S | +0,01 | +0,03 | +0,06 | 012 00M | +0,01 | +0,03 | +0,06 |
|---------|-------|-------|-------|---------|-------|-------|-------|
| Ø6,997 | ✓ | ✓ | | Ø6,997 | | ✓ | |
| Ø7,000 | ✓ | ✓ | | Ø7,000 | ✓ | ✓ | |
| Ø7,005 | ✓ | ✓ | | Ø7,005 | ✓ | ✓ | |
| Ø7,010 | ✓ | ✓ | | Ø7,010 | ✓ | ✓ | |
| Ø7,015 | ✓ | ✓ | ✓ | Ø7,015 | | ✓ | ✓ |
| Ø7,020 | ✓ | ✓ | ✓ | Ø7,020 | | ✓ | ✓ |
| Ø7,025 | ✓ | ✓ | ✓ | Ø7,025 | | ✓ | ✓ |
| Ø7,030 | | ✓ | ✓ | Ø7,030 | | ✓ | ✓ |
| Ø7,035 | | ✓ | ✓ | Ø7,035 | | ✓ | ✓ |
| Ø7,040 | | ✓ | ✓ | Ø7,040 | | ✓ | ✓ |



| 052 00D | +0,01 | +0,03 | +0,06 |
|---------|-------|-------|-------|
| Ø6,980 | ✓ | ✓ | |
| Ø6,985 | ✓ | ✓ | |
| Ø6,990 | ✓ | ✓ | |
| Ø6,995 | ✓ | ✓ | |
| Ø7,000 | ✓ | ✓ | |
| Ø7,005 | | ✓ | ✓ |
| Ø7,010 | | ✓ | ✓ |
| Ø7,015 | | ✓ | ✓ |
| Ø7,020 | | ✓ | ✓ |
| Ø7,025 | | ✓ | ✓ |



✓: always available in stock

Columns define diameter

Rows define lip thickness

* Lip thickness is a compensation of abrasion which occurs from angled surface correction.



Magnetic Plate Screw (for Bosch)

Global Diesel Code: 012 725
F 00H N35 725



**MB Actros Injector Fuel
Inlet Connector**

Global Diesel Code: 012 467
2 433 370 467



MB Injector Heat Shield

Global Diesel Code: 012 003
F 00Z W00 003



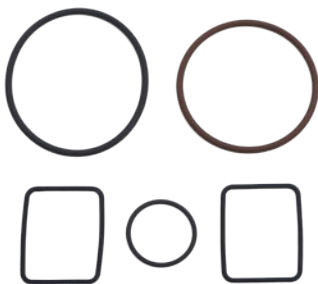
**MB Actros Injector
Washer**

Global Diesel Code: 012 049
2 430 105 049



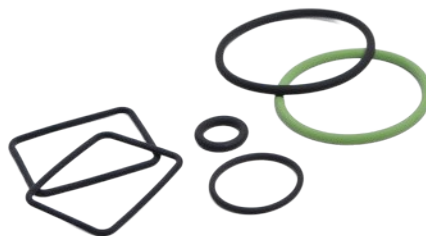
EUP Coil Screw

Global Diesel Code: 012 CFS



MB Axor-Actros Repair Kit

Global Diesel Code: 012 069
F 00H N37 069



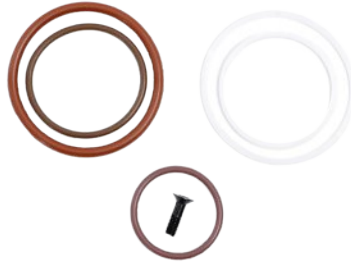
MB Atego Repair Kit

Global Diesel Code: 012 070
F 00H N37 070



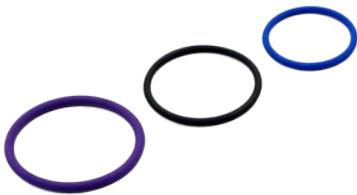
DAF Repair Kit

Global Diesel Code: 012 892
F 00V X99 892



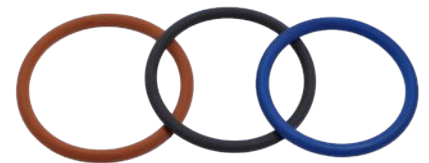
Solenoid Repair Kit (for Bosch)

Global Diesel Code: 012 928
F 00H N37 928



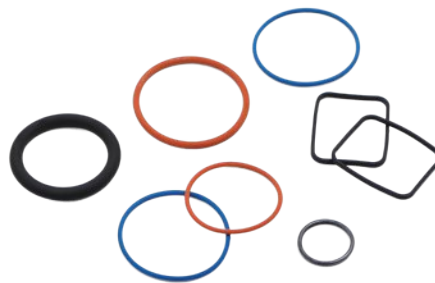
EUI Repair Kit (for Scania)

Global Diesel Code: 012 999
F 00V X99 999



EUI Repair Kit (for Iveco)

Global Diesel Code: 012 996
F 00V X99 996



EUI Repair Kit (for Detroit S50/60)

Global Diesel Code: 052 001
5230001



Actuator Valve Needle

Global Diesel Code: 072 240

Actuator Valve Needle Sets

Economic Set (2 pieces for each size, 64 pieces total)
Global Diesel Code: 072 240-E

Standard Set (4 pieces for each size, 128 pieces total)
Global Diesel Code: 072 240-S

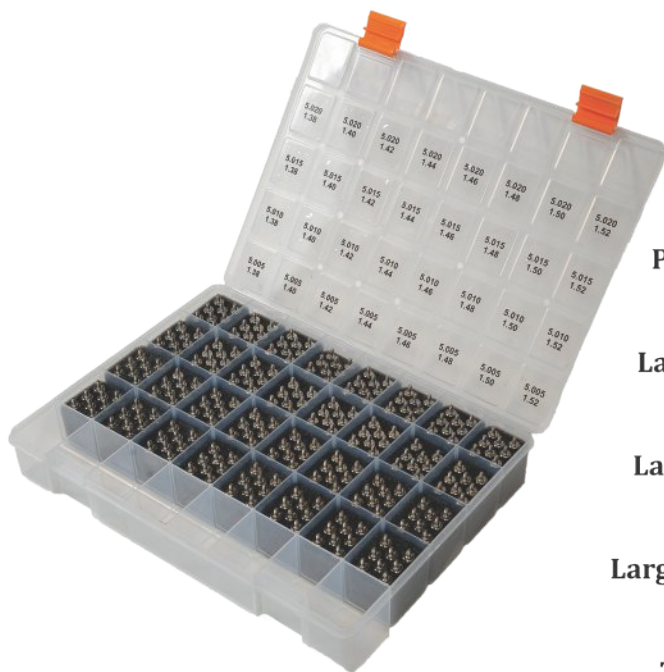
Professional Set (8 pieces for each size, 256 pieces total)
Global Diesel Code: 072 240-A

Large Economic Set (2 pieces for each size, 64 pieces total)
Global Diesel Code: 072 240-LE

Large Standard Set (4 pieces for each size, 128 pieces total)
Global Diesel Code: 072 240-LS

Large Professional Set (8 pieces for each size, 256 pieces total)
Global Diesel Code: 072 240-LA

The Master Set (8 pieces for each size, 512 pieces total)
Global Diesel Code: 072 240-M



| 072 240 | 1,38 | 1,40 | 1,42 | 1,44 | 1,46 | 1,48 | 1,50 | 1,52 |
|---------|------|------|------|------|------|------|------|------|
| Ø5,005 | ✓ | ✓ | ✓ | ✓ | ✓ | ✓ | ✓ | ✓ |
| Ø5,010 | ✓ | ✓ | ✓ | ✓ | ✓ | ✓ | ✓ | ✓ |
| Ø5,015 | ✓ | ✓ | ✓ | ✓ | ✓ | ✓ | ✓ | ✓ |
| Ø5,020 | ✓ | ✓ | ✓ | ✓ | ✓ | ✓ | ✓ | ✓ |
| Ø5,025 | ✓ | ✓ | ✓ | ✓ | ✓ | ✓ | ✓ | ✓ |
| Ø5,030 | ✓ | ✓ | ✓ | ✓ | ✓ | ✓ | ✓ | ✓ |
| Ø5,035 | ✓ | ✓ | ✓ | ✓ | ✓ | ✓ | ✓ | ✓ |
| Ø5,040 | ✓ | ✓ | ✓ | ✓ | ✓ | ✓ | ✓ | ✓ |

Columns define diameter
Rows define wall thickness

✓: always available in stock

* **Large Sets** include bigger diameter than 5,020. **The Master Set** includes all measurements.



Actuator Valve Nut

Global Diesel Code: 072 240N

Actuator Disk

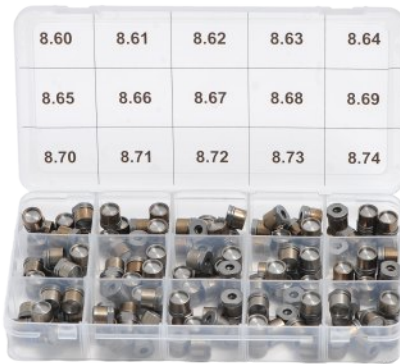
Global Diesel Code: 072 240D

Actuator Plug

Global Diesel Code: 072 240P

072 240N

- 8,60
- 8,61
- 8,62
- 8,63
- 8,64
- 8,65
- 8,66
- 8,67
- 8,68
- 8,69
- 8,70
- 8,71
- 8,72
- 8,73
- 8,74



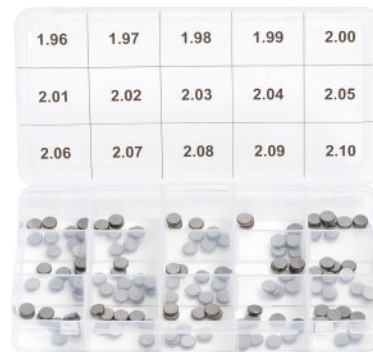
Actuator Valve Nut Set

(10 pcs for each, 150 pcs total)

Global Diesel Code: 072 240N-S

072 240D

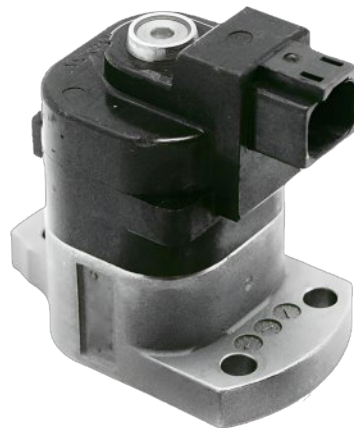
- 1,96
- 1,97
- 1,98
- 1,99
- 2,00
- 2,01
- 2,02
- 2,03
- 2,04
- 2,05
- 2,06
- 2,07
- 2,08
- 2,09
- 2,10



Actuator Disk Set

(10 pcs for each, 150 pcs total)

Global Diesel Code: 072 240D-S



Remanufactured Actuator Set

(2 Timing - 2 Metering)

Global Diesel Code: 072 178

1784239 - 1784240



EUI Repair Kit

Global Diesel Code: 072 237
1441237



EUI Filter Set

Global Diesel Code: 072 707
1434707



EUI Oil Seal

Global Diesel Code: 072 063
5025063



Actuator Repair Kit

Global Diesel Code: 072 ARK



Actuator O'ring Set

Global Diesel Code: 072 AOS

Motorized Unit Pump/Injector Repair Kit



We have designed this kit for technically correct repairing of pumps/injectors and to provide the fastest process. Thus, we have presented the best solution to the diesel services. Diesel services save a lot of time due to this kit. There is a video about using of this kit on QR-Code. Using is quite easy and simple as shown in video.



Hole correction tool diameter changes by movement of screws on tool. Don't need to hit to change the diameter. In this case, tool surface remains intact and tool life would be more.



There are three types of **angled surface correction** tools which are *coarse* (single circle), *medium* (double circle), *finish* (triple circle). You can choose it according to abrasion. When you use these tools (hole and angled surface correction tools), the angle and hole will have common axis. The shape will be a perfect "Y". Because, the angle doesn't move and grow so that the angle is totally constant, you can understand that this tool life span is longer than traditional lapping tools. Only the diameter is changable.



After correction the angled surface, we grind the valve from the length so as to counteract the approach of the valve coil. We don't make any process to magnetic plate or any other to anywhere for adjusting. Because, If you make any process to anywhere for adjusting to gap between valve and coil, excluding valve length, the pump/injector will be disrupt. Pump/Injector will not work like the old. We just grind to length of valve by using **grinder**.

There are lots of health check tools are designed with **Motorized Repair Kit** for Unit Pump/Injector Systems



Motorized Unit Pump/Injector Repair Kit



Motorized EUI/EUP Repair Kit Motorized System

Global Diesel Code: 012 MS

Motorized System Attachment for EUI

Global Diesel Code: 012 MSA

Motorized System Attachment for Detroit EUI

Global Diesel Code: 052 MSA



- Single Circle is Coarse
- Double Circle is Medium
- Triple Circle is Finish



Angled Surface Correction Tool

Global Diesel Codes

- 012 C-ASC (Coarse) [Ø6,995-Ø7,045]
- 012 M-ASC (Medium) [Ø6,995-Ø7,045]
- 012 F-ASC (Finish) [Ø6,995-Ø7,045]
- 012 L-C-ASC (Coarse) [Ø7,045-Ø7,090]
- 012 L-M-ASC (Medium) [Ø7,045-Ø7,090]
- 012 L-F-ASC (Finish) [Ø7,045-Ø7,090]

Angled Surface Correction Tool for Detroit EUI

Global Diesel Codes

- 052 M-ASC (Medium)
- 052 F-ASC (Finish)

Hole Correction Tool

Global Diesel Code: 012 HC



Grinder

Global Diesel Code: 012 G



Grinder Attachment for EUI

Global Diesel Code: 012 GAI



EUI Nozzle Control Tool

Global Diesel Code: 012 SNC



EUP Element Leakage Control Tool

Global Diesel Code: 012 ELC



Plate Side Measuring Tool

Global Diesel Codes

012 PSM

012 PSM-I (with Dial Indicator)



EUI Plug Measuring Tool

Global Diesel Codes

012 SPM

012 SPM-I (with Dial Indicator)



EUP Plug Measuring Tool

Global Diesel Codes

012 APM

012 APM-I (with Dial Indicator)



Nozzle, Valve and Element Control Kit for EUI

Global Diesel Code: 012 GC



Nozzle, Valve and Element Control Kit for Detroit EUI

Global Diesel Code: 052 GC

Motorized Unit Pump/Injector Repair Kit

Motorized EUI/EUP Repair Kit Contents List

| Product Name | Product Code | Economic | Standard | Professional | Detroit Eco | Detroit Std | Detroit Pro | The Master |
|---|--------------|----------|----------|--------------|-------------|-------------|-------------|------------|
| Motorized System | 012 MS | ✓ | ✓ | ✓ | ✓ | ✓ | ✓ | ✓ |
| Motorized System Attachment for EUI | 012 MSA | ✓ | ✓ | ✓ | ✓ | ✓ | ✓ | ✓ |
| Motorized System Attachment for Detroit EUI | 052 MSA | | | | ✓ | ✓ | ✓ | ✓ |
| Angled Surface Correction Tool (Coarse) [Up to Ø7,045] | 012 C-ASC | ✓ | ✓ | ✓ | ✓ | ✓ | ✓ | ✓ |
| Angled Surface Correction Tool (Medium) [Up to Ø7,045] | 012 M-ASC | ✓ | ✓ | ✓ | ✓ | ✓ | ✓ | ✓ |
| Angled Surface Correction Tool (Finish) [Up to Ø7,045] | 012 F-ASC | ✓ | ✓ | ✓ | ✓ | ✓ | ✓ | ✓ |
| Large Angled Surface Correction Tool (Coarse) | 012 L-C-ASC | | | ✓ | | | ✓ | ✓ |
| Large Angled Surface Correction Tool (Medium) | 012 L-M-ASC | | | ✓ | | | ✓ | ✓ |
| Large Angled Surface Correction Tool (Finish) | 012 L-F-ASC | | | ✓ | | | ✓ | ✓ |
| Angled Surface Correction Tool for Detroit EUI (Medium) | 052 M-ASC | | | | ✓ | ✓ | ✓ | ✓ |
| Angled Surface Correction Tool for Detroit EUI (Finish) | 052 F-ASC | | | | ✓ | ✓ | ✓ | ✓ |
| Hole Correction Tool | 012 HC | 1 Piece | 3 Pieces | 3 Pieces | 1 Piece | 3 Pieces | 3 Pieces | 3 Pieces |
| Grinder | 012 G | | ✓ | ✓ | | ✓ | ✓ | ✓ |
| Grinder Attachment for EUI | 012 GAI | | ✓ | ✓ | | ✓ | ✓ | ✓ |
| EUP Plug Measuring Tool (with Dial Indicator) | 012 APM-I | ✓ | ✓ | ✓ | ✓ | ✓ | ✓ | ✓ |
| EUI Plug Measuring Tool (with Dial Indicator) | 012 SPM-I | ✓ | ✓ | ✓ | ✓ | ✓ | ✓ | ✓ |
| EUI Nozzle Control Tool | 012 SNC | ✓ | ✓ | ✓ | ✓ | ✓ | ✓ | ✓ |
| EUP Element Leaskage Control Tool | 012 ELC | ✓ | ✓ | ✓ | ✓ | ✓ | ✓ | ✓ |
| Plate Side Measuring Tool (with Dial Indicator) | 012 PSM-I | ✓ | ✓ | ✓ | ✓ | ✓ | ✓ | ✓ |
| Nozzle, Valve and Element Control Kit for EUI | 012 GC | | | ✓ | | | | ✓ |
| Nozzle, Valve and Element Control Kit for Detroit EUI | 052 GC | | | | | | ✓ | ✓ |



Manual EUI/EUP Repair Kit



3-E DESIGN

**ERGONOMIC
EXPRESSIVE
ECONOMIC**

**Special Helical Surface
for High Cutting
Performance**

Global Diesel Codes of Manual EUI/EUP Repair Tools

- 012 M-HC : Hole Correction Tool
- 052 M-HC : Hole Correction Tool for Detroit EUI
- 012 M-C-ASC: Angled Surface Correction Tool (Coarse)
- 012 M-F-ASC: Angled Surface Correction Tool (Finish)
- 052 M-C-ASC: Angled Surface Correction Tool for Detroit EUI (Coarse)
- 052 M-F-ASC: Angled Surface Correction Tool for Detroit EUI (Finish)

Manual EUI/EUP Repair Kit [S Series]



**LONG LIFE SPAN
PRECISE
ATTRACTIVE
ERGONOMIC**

**Special Helical Surface
for High Cutting Performance**

Global Diesel Codes of Manual EUI/EUP Repair Tools [S Series]

- 012 M-HC-S : Hole Correction Tool
- 052 M-HC-S : Hole Correction Tool for Detroit EUI
- 012 M-C-ASC-S: Angled Surface Correction Tool (Coarse)
- 012 M-F-ASC-S: Angled Surface Correction Tool (Finish)
- 052 M-C-ASC-S: Angled Surface Correction Tool for Detroit EUI (Coarse)
- 052 M-F-ASC-S: Angled Surface Correction Tool for Detroit EUI (Finish)

Adjustable by Screws

SCANIA (ISX) HPI CUMMINS ACTUATOR REPAIR KIT



ALL NEEDS IN ONE KIT
ERGONOMIC DESIGN
THE BEST SOLUTION

Special Helical Surface
FOR HIGH CUTTING PERFORMANCE



Hole Correction Tool
Global Diesel Code: 072 HC



Coil Side Measuring Tool
Global Diesel Code: 072 CSM
072 CSM-I (with Dial Indicator)



Plug Assembly Tool
Global Diesel Code: 072 PAT



Trigerring Measuring Tool
Global Diesel Code: 072 TMT
072 TMT-I (with Dial Indicator)



Needle Assembly Tool
Global Diesel Code: 072 NAT



Ford Cargo Ramp
Global Diesel Code: 021 354
515354



Ford Cargo Ramp Roller
Global Diesel Code: 021 200
508200



Ford Cargo Governor Weight
Global Diesel Code: 021 250
513250



Fuel Pump Throttle Shaft Bush
Global Diesel Code: 011 333
1 460 324 333



Head Rotor Plug
Global Diesel Code: 011 306
1 463 461 306



Timer Piston
Global Diesel Code: 021 419C
7177-419C



Governor Weight
Global Diesel Code: 021 914G
7123-914G



Governor Weight
Global Diesel Code: 021 914E
7123-914E



www.global-diesel.com



sales@global-diesel.com



+90 212 481 84 89



Teknik Oto Sanayi Sitesi 1. Blok No: 2
Cevizlibağ - Topkapı / İSTANBUL

